

MAXVU rail

DIN-rail Temperature Controller/Transmitter and Limiter



MAXVU Rail is a compact DIN-rail mount temperature controller/transmitter and limiter range for general industrial and scientific equipment requiring a reduced back panel footprint, centralised control or minimal front panel components.

The slim 22.5mm width behind panel devices are quick to integrate in a system and easy to set-up, the affordable product family offers;

- **PID controller** for stable and efficient temperature and process control
- **Transmitter function** for monitoring and data collection of process measurements
- FM approved **limit device** for machine protection

Reduce setup time

Clear text/graphic display

MAXVU Rail incorporates the latest Oled technology display for high contrast text/graphic display with a wide viewing angle, easily visible to configure in bright sunlight or a dark control panel.

Short set up menu

MAXVU Rail has been specially designed for ease-of-use through a quick setup menu accessed from the front keypad.

- Includes the most common parameter settings
- Prioritised parameter options, default is the most common option with second most common next on the list
- Other parameters still available through the full menu

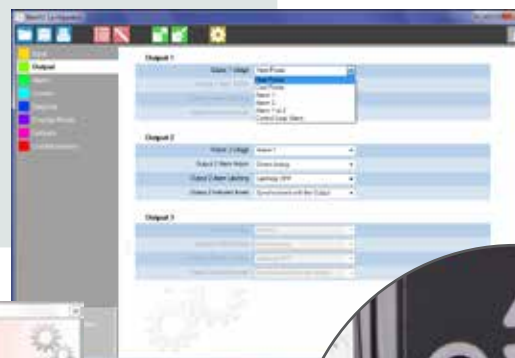
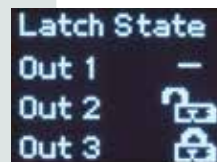
PC Configuration software

Alternatively, fast configuration of instruments can be achieved with the MAXVU software via the controller's front access configuration port

- Logical menu driven interface
- Tables with drop down menus
- Graphical setup wizard with informative help panel
- Save configuration files
- Print report of controller settings



22.5mm



Key Features

CONTROL

PID / ON-OFF / limit / transmitter
Heat / cool strategies
2 alarms - latching
Ramp/dwell with delay time

HMI

Text /graphic Oled display
3 LED status indicators

PROGRAMMING

Front keys or software programming



OUTPUTS

2 or 3 outputs; relay, SSR or linear (1 max)
Linear ranges: 0/4 to 20mA, 0/1 to 5V, 0/2 to 10V

MECHANICS

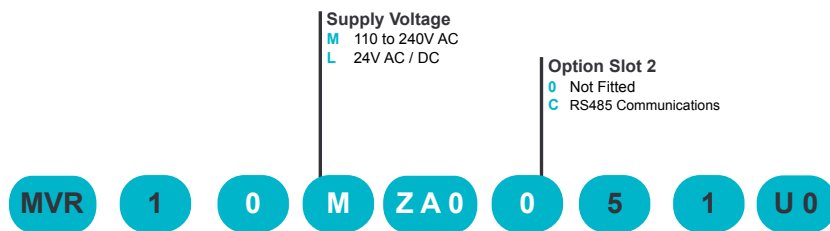
DIN rail, 22.5mm width
RS485 comms bus connector
option (reduces wiring)

INPUTS

Thermocouple: B, C, J, K, L, N, R, S, T,
RTD: PT100 2 or 3 wire,
Linear ranges: 0/4 to 20mA, 0/1 to 5V, 0/2 to 10V
Calibration: 1 or 2 point
Digital input: Isolated

Ordering Codes

MAXVU Rail Controller / Transmitter



Digital Input
1 Isolated

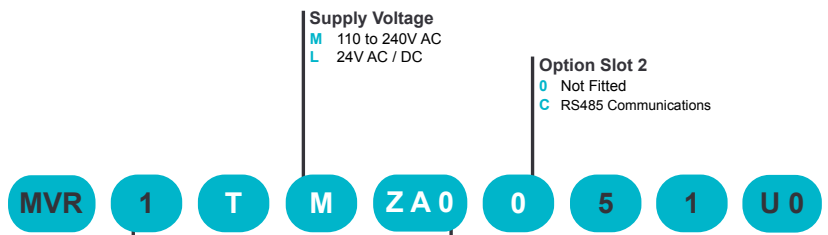
Variant
0 Standard
E Extrusion

Supply Voltage
M 110 to 240V AC
L 24V AC / DC

Option Slot 2
0 Not Fitted
C RS485 Communications

	Out 1	Out 2	Out 3
ZA0	C/O Relay	SSR	None
ZR0	C/O Relay	Relay	None
AA0	SSR	SSR	None
ZAR	C/O Relay	SSR	Relay
ZRR	C/O Relay	Relay	Relay
AAR	SSR	SSR	Relay
ZAL	C/O Relay	SSR	Linear
ZRL	C/O Relay	Relay	Linear
AAL	SSR	SSR	Linear

MAXVU Rail Limiter



Digital Input
1 Isolated

Supply Voltage
M 110 to 240V AC
L 24V AC / DC

Option Slot 2
0 Not Fitted
C RS485 Communications

	Out 1	Out 2	Out 3
ZR0	C/O Relay	Relay	None
ZRR	C/O Relay	Relay	Relay
ZAL	C/O Relay	SSR	Linear
ZRL	C/O Relay	Relay	Linear
ZA0	C/O Relay	SSR	None
ZAR	C/O Relay	SSR	Relay

Flexible for Use in a Range of Applications

MAXVU Rail provides an affordable solution for applications needing essential temperature control.

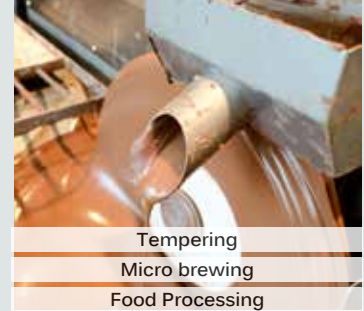
Heated Enclosures



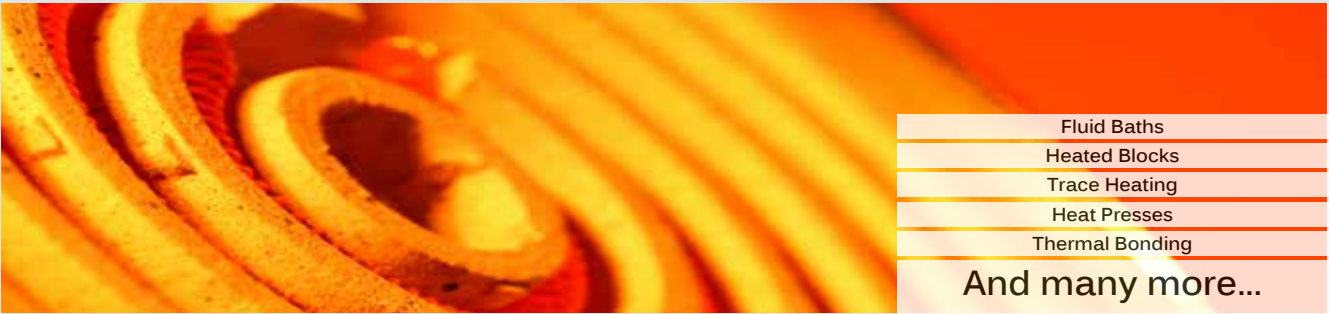
Plastic & Rubber Extrusion



Food and Beverage



General Heat Processes



Contact Us



Email: enquiries@west-cs.com
Website: www.west-cs.co.uk



Telephone: +44 (0)1273 606271
Fax: +44 (0)1273 609990



Address: The Hyde Business Park
Brighton, East Sussex
BN2 4JU
United Kingdom

BR-MVR-1-UK-1705